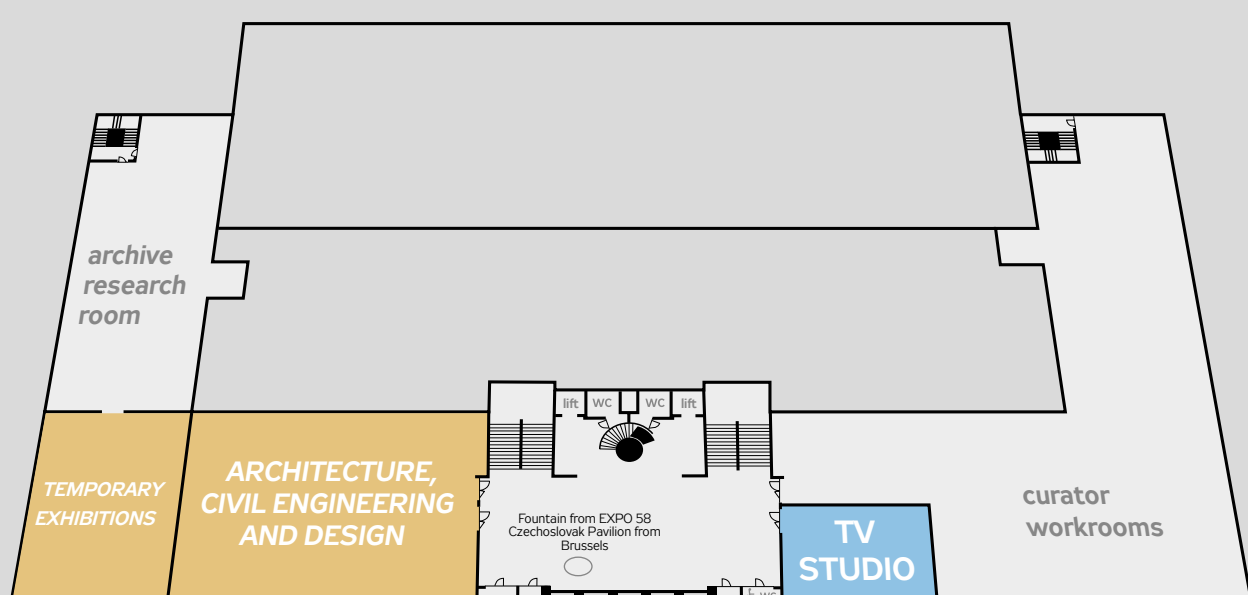
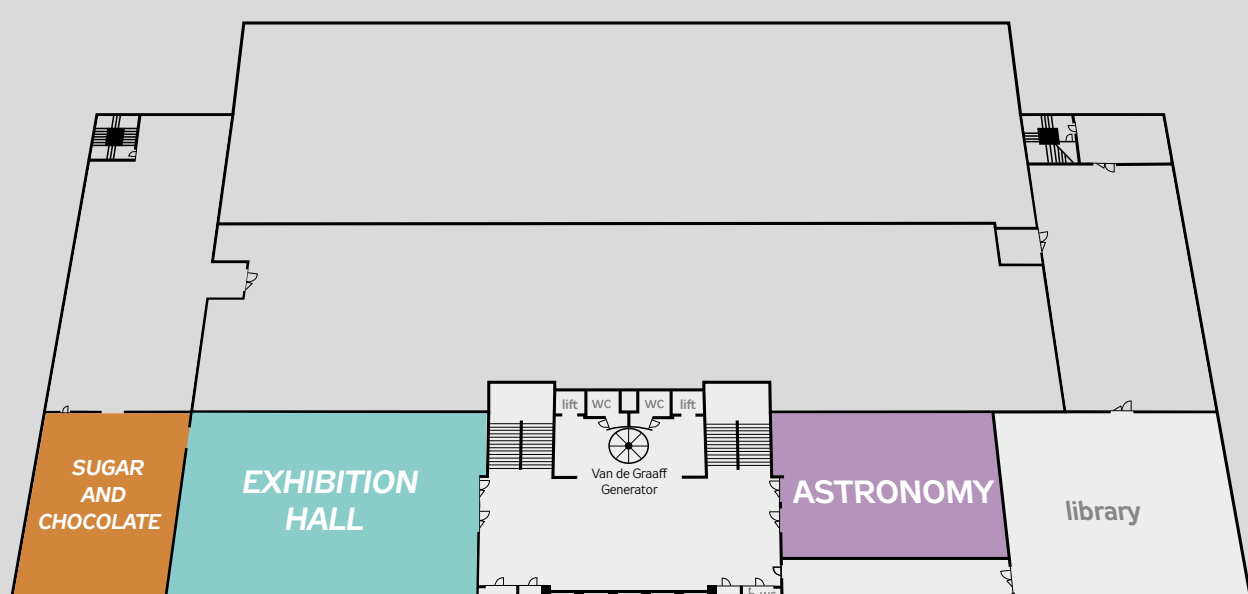


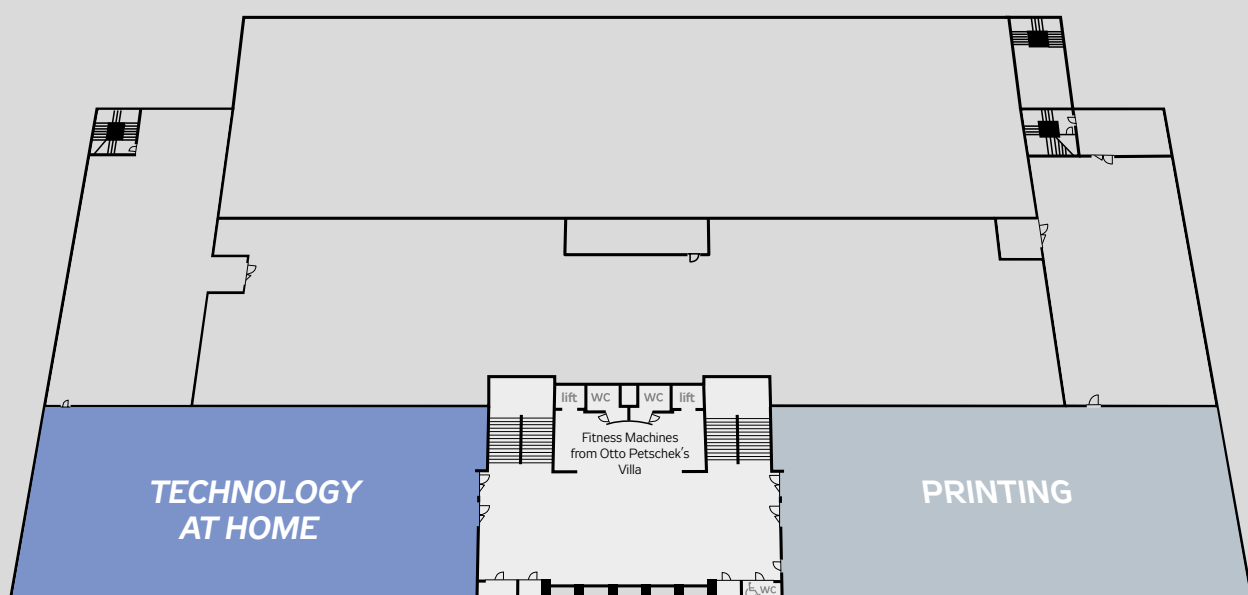
3



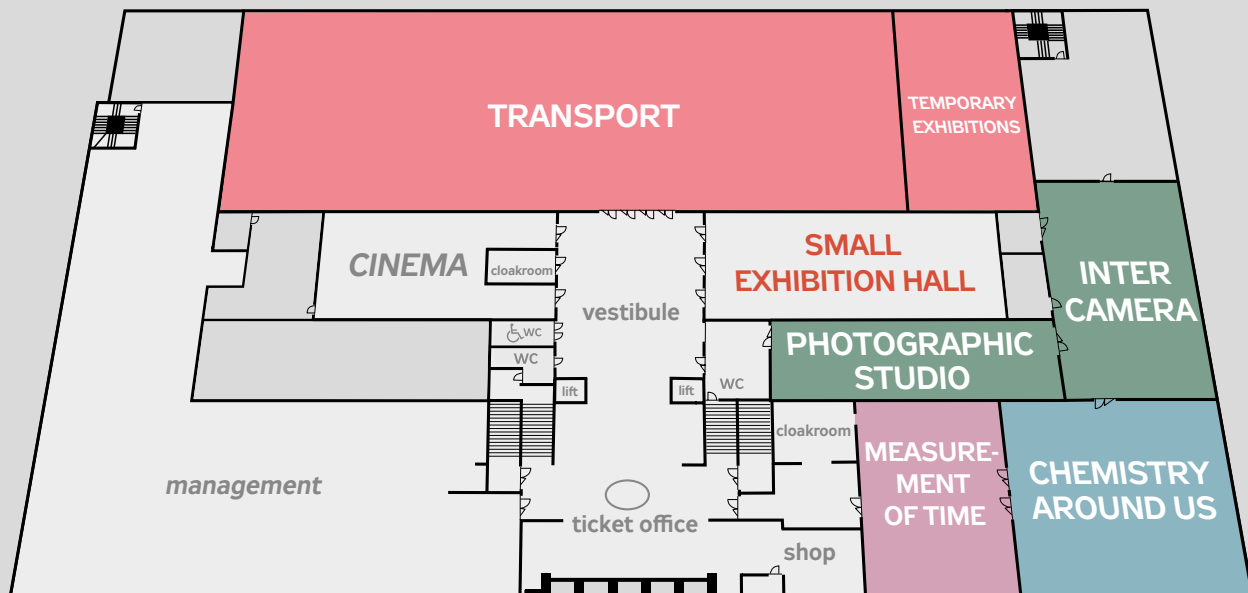
2



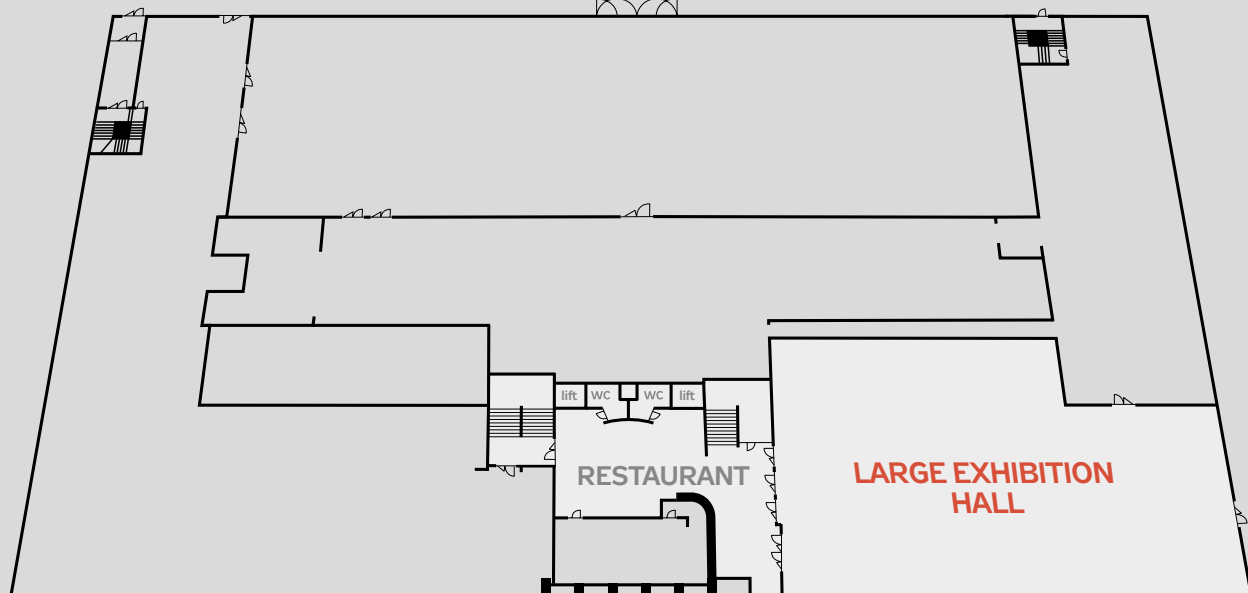
1



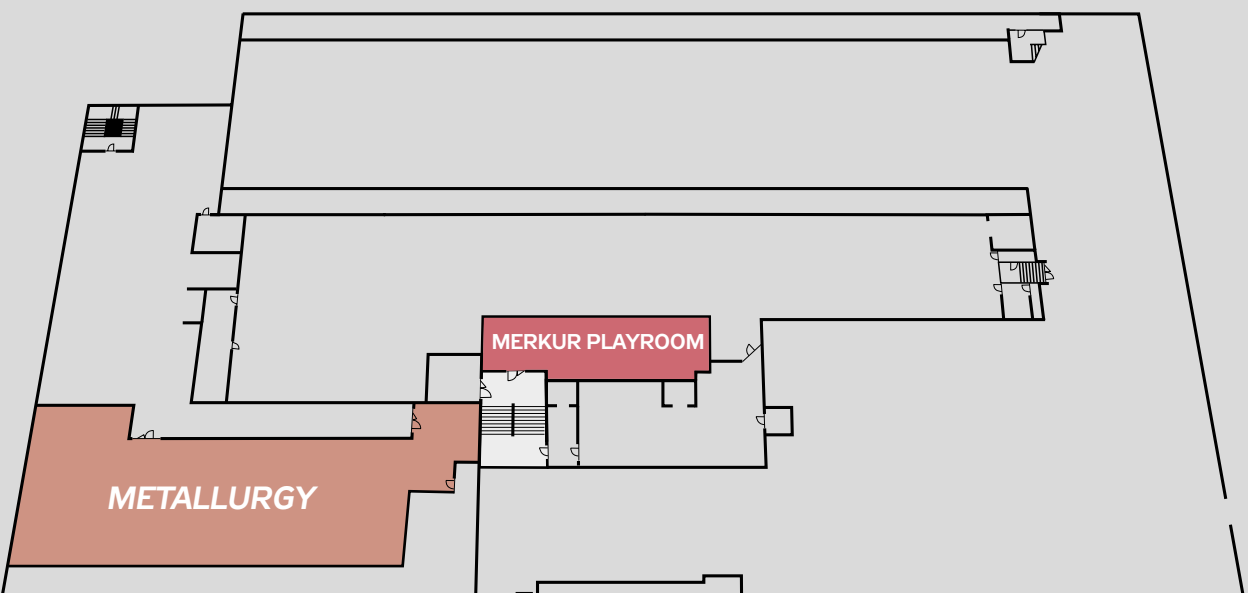
0



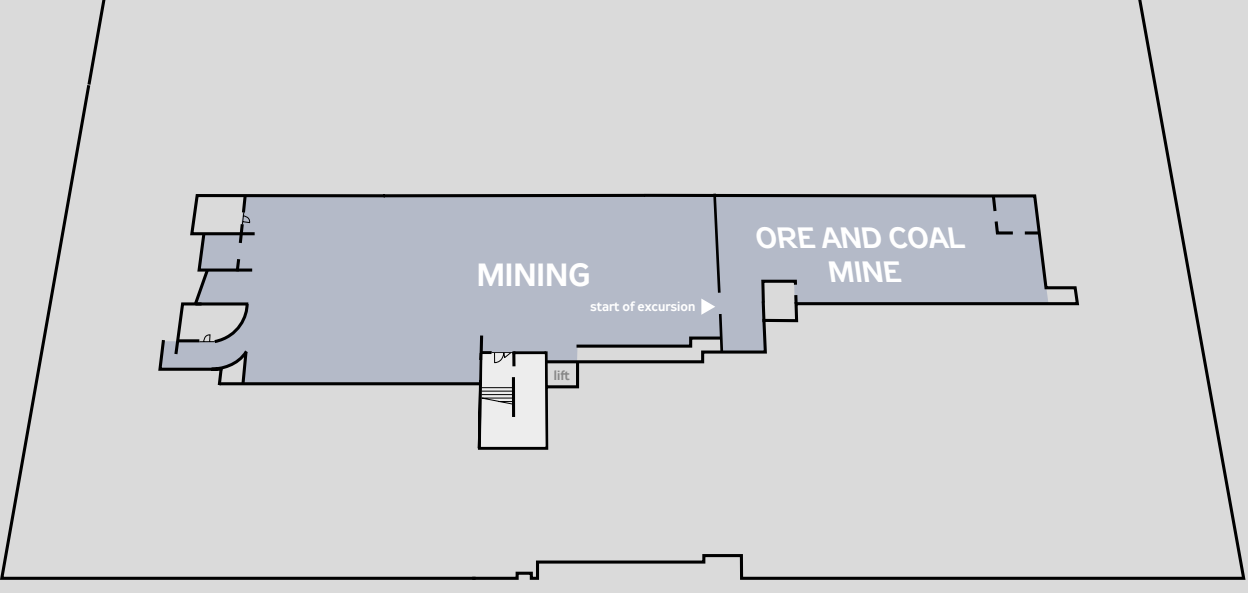
-1



-2



-3



The Letná Carousel

One of the two oldest floor carousels in Europe, it entertained children and adults alike in Letenské sady from 1894 to 2004. Today, this unique monument is in the care of the museum and was put it back into operation in 2022 after a challenging renovation. The museum oversaw the restoration of the 19 original horses, the structure itself and the technological equipment. The carousel, located opposite the museum building, is open during the summer months.

For more information, please visit www.ntm.cz



Centre for Building Heritage in Plasy

The Building Heritage Center is a branch of the National Technical Museum located in the restored farm complex of the valuable historical manastery in Plasy. The museum presents an attractive way to learn about the history of architecture both in terms of the exhibition, divided according to the individual stages of the building's construction, and in the farmyard, where visitors can try out historical technologies. The farmyard also offers facilities for organizing scientific and educational events.

For up-to-date information, including opening times and admission prices, please visit www.muzeum-plasy.cz



NTM's Railway Depository in Chomutov

The NTM manages the largest state collection of historic rail vehicles in the Czech Republic. Visitors to the railway depot can see nearly 100 rail vehicles of various gauges and types – from an 1870 steam locomotive to a 1980 rail snow plough. Also on display are locomotives of the former Czechoslovak Rails (ČSD), saloon, passenger and diesel cars, electric and diesel locomotives, historic drasines, as well as vehicles that until recently were in regular service with ČD.

Up-to-date information including opening hours and admission prices can be found at www.muzeum-chomutov.cz